

We regularly carry top plates with other than standard bolt hole centers: As shown in the chart, these will interchange with standard top plates. There are other optional top plates and/or bolt hole centers available.

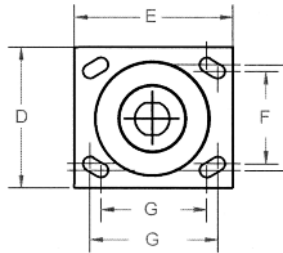
To order: Use standard caster number with option number of "ST-series#" for swivel or "RT-series#" for rigid followed by the alpha bolt hole center designation.

Example: 16TM06201S ST16J

(swivel top, 16 series, bolt hole center "A")

272PD06201R RT272D

(Rigid top, dual wheel 72 series, bolt hole center "F")



Top Plate & Bolt Hole Centers Chart

| F & G Bolt Hole Centers (inches) | D & E Top Plate Size (inches) | Attaching Bolt Size (inches) | Special Bolt Hole Template Design | | | | | | | | | |
|-----------------------------------------------------|-------------------------------------|------------------------------------|-----------------------------------|--------|--------|----|----|----|----|-----|-----|---|
| | | | 12, 16, 50 | 71, 53 | 72, 54 | 81 | 90 | 94 | 95 | 100 | 400 | |
| Slotted for 3 x 4 or 2-5/8 x 3-5/8 | 4 x 5 | 3/8 | J | J | | | | | | | | |
| Slotted for 3-3/8 x 5-1/4 or 2-7/16 x 4-15/16 | 4-1/2 x 6-1/4 | 1/2 | K | | | | | | | | K | |
| Not slotted 2-1/8 x 4 | 4 x 5 | 3/8 | | G | | | | | | | | |
| 3 x 3 | 4 x 4 | 3/8 | | H | | | | | | | | |
| 3-1/4 x 6 | 4-1/2 x 7-1/4 | 1/2 | | | W | W | | | | | | |
| 3-1/4 x 6 | 5-1/2 x 7-1/4 | 1/2 | | | | | W | | | | | |
| 4-1/8 x 4-1/2 | 5 x 5-1/2 | 3/8 | D | | D | D | | | | | | |
| 4-7/8 x 6-3/4 | Swivel 6-1/2 x 8 Rigid 6 x 8 | 5/8 | | | | | | | C | | | |
| 7 x 9-3/4 | Swivel 8-1/2 x 11 Rigid 9 x 11 | 5/8 | | | | | | | | T | | |
| Slotted for 4-5/8 x 5-1/2 or 4-3/8 x 5-5/8 | 6 x 7 | 1/2 | | | | | | | | | | N |

Overall Heights Chart

The table below shows variations in overall height special overall heights can be obtained y using smaller diameter wheels in larger rigs. For example, by using 6" wheels in 8" rigs, the height is 1/2" the difference in wheel diameter, or 1" lower than the regular height with an 8" wheel.

| Series | Wheel Diameter (inches) | Optional Height (inches) | Swivel Lead (inches) | Option Number |
|------------|-------------------------|--------------------------|----------------------|---------------|
| 12, 16, 33 | 3-1/4 | 5-1/4 | 1-11/16 | HS-42 |
| 12, 16, 33 | 4 | 5-1/4 | 1-11/16 | HS-86 |
| 12, 16, 33 | 5 | 6-1/8 | 1-11/16 | HS-50 |
| 12, 16, 33 | 5 | 6-3/4 | 1-3/4 | HS-54 |
| 12, 16, 33 | 6 | 6-7/8 | 2-1/4 | HS-56 |
| 12 | 6 | 7-1/4 | 1-3/4 | HS-82 |
| 16 | 6 | 7-3/8 | 1-3/4 | HS-59 |
| 16 | 6 | 7-1/2 | 1-3/4 | HS-60 |
| 2 | 6 | 7-3/4 | 1-3/4 | HS-85 |
| 12, 16 | 8 | 10 | 1-3/4 | HS-81 |
| 34, 62 | 8 | 9-1/2 | 2-1/4 | HS-76 |
| 34, 62 | 8 | 9-3/4 | 1-3/4 | HS-83 |
| 63 | 8 | 9-1/2 | 2-1/4 | HS-84 |
| 100 | 8 | 9-1/2 | 2-1/2 | HS-89 |

Replacement Part Chart

The table immediately below gives part numbers of caster axles, spanner bushings, straight roller bearings and washers for most standard casters listed in this catalog. Please consult Acorn for tapered roller bearing wheels or casters not listed.

| Caster Series Number & Description | Replacement Part Numbers | | | | | | | |
|------------------------------------|---------------------------|--------------|-----------------|---------------|----------------|------------------------|-------------------------|--------------|
| | Wheel Hub Length (inches) | Axle and Nut | Spanner Bushing | Thrust Washer | Roller Bearing | Plain Retaining Washer | Sealed Retaining Washer | Ball Bearing |
| 02- Roller Bearing | 1-3/8 | ZJ063508 | ZF060824 | WA082400 | ZB081718 | WA081790 | WA081790 | |
| 02-Oilex & Plain Bearing | 1-3/8 | ZJ063508 | ZF060824 | WA082400 | | | | |
| 02-Ball Bearing | 1-5/8 | ZJ063509 | | | | | WA121905 | |
| 09, 12, 16 | 1-5/8 | ZJ085408 | ZF081239 | WA121905 | ZB121920 | WA121905 | WA121905 | ZA081900 |
| | 2-3/16 | ZJ085408 | ZF081239 | WA121905 | ZB121930 | WA121905 | WA121905 | ZA081902 |
| 31, 33 | 1-5/8 | ZJ085408 | ZF081230 | WA121905 | ZB121920 | WA121905 | WA121905 | |
| 34 | 2-3/16 | ZJ086408 | ZF081239 | WA121905 | ZB121930 | WA121905 | WA121905 | |
| 50 | 1-5/8 | ZJ086408 | ZF081230 | WA122600 | ZB121920 | | WA121990 | |
| 51, 53, 54 | 2-3/16 | ZJ086408 | ZF081239 | WA122600 | ZB121930 | | WA121990 | |
| 61, 62, 71, 72 | 1-27/32 | ZJ085408 | ZF081239 | WA121905 | ZB121930 | WA121905 | WA121905 | ZA081902 |
| 61, 62, 72 | | ZJ086408 | ZF081248 | WA122600 | ZB121940 | WA121990 | WA121990 | |
| 63 | 2-13/32 | ZJ126808 | ZF121648 | WA163900 | ZB163140 | WA163190 | WA163190 | |
| 78 | 2-3/16 | ZJ085808 | ZF081239 | WA121905 | ZB121930 | WA121905 | WA121905 | |
| | 2-3/4 | ZJ086809 | ZF081248 | WA122600 | ZB121940 | WA121990 | WA121990 | |
| 81, 84 | 2-3/4 | ZJ127608 | ZF121657 | WA163900 | ZB163148 | WA163103 | WA163190 | |
| 90, 92 | 3-1/4 | ZJ127608 | ZF121657 | WA163900 | ZB163148 | WA163103 | WA163190 | |
| | 4-1/4 | ZJ169609 | ZF162073 | WA204800 | ZB203694 | WA203903 | WA203990 | |
| 100 | 2-3/16 | ZJ085408 | ZF081239 | WA121905 | ZX121930 | WA121905 | WA121905 | ZA081902 |

Spanner Bushings & Thrust Washers

All spanner bushings are hardened to form precision inner race for roller bearings. Except as noted below by the asterisk (*), all spanner bushings are cross drilled for lubrication through hollow axle. Thrust washers are hardened. They are not part of the spanner bushing assembly and must be ordered separately.

| Part Number | Spanner Bushing | | | Thrust Washers | | Part Number | Spanner Bushing | | | Thrust Washers | |
|-------------|-----------------|-------------|-----------------|----------------|---------------|-------------|-----------------|-------------|-----------------|----------------|----------------|
| | ID (inches) | OD (inches) | Length (inches) | Number | Size (inches) | | ID (inches) | OD (inches) | Length (inches) | Number | Size (inches) |
| ZF060824 | 3/8 | 1/2 | 1-5/8 | WA082400 | 1/2 x 1-1/2 | ZF081264* | 1/2 | 3/4 | 4 | WA122600 | 3/4 x 1-5/8 |
| ZF081030 | 1/2 | 5/8 | 1-7/8 | WA102400 | 5/8 x 1-5/8 | ZF101239 | 5/8 | 3/4 | 2-7/16 | WA122600 | 3/4 x 1-5/8 |
| ZF081033 | 1/2 | 5/8 | 2-3/64 | WA102400 | 5/8 x 1-5/8 | ZF121648 | 3/4 | 1 | 3 | WA163900 | 1 x 2-7/16 |
| ZF081036 | 1/2 | 5/8 | 2-1/4 | WA102400 | 5/8 x 1-5/8 | ZF121657 | 3/4 | 1 | 3-1/2 | WA163900 | 1 x 2-7/16 |
| ZF081038 | 1/2 | 5/8 | 2-3/8 | WA102400 | 5/8 x 1-5/8 | ZF121664* | 3/4 | 1 | 4 | WA163900 | 1 x 2-7/16 |
| ZF081039 | 1/2 | 5/8 | 2-7/16 | WA102400 | 5/8 x 1-5/8 | ZF121667* | 3/4 | 1 | 4-13/16 | WA163900 | 1 x 2-7/16 |
| ZF081046 | 1/2 | 5/8 | 2-7/8 | WA102400 | 5/8 x 1-5/8 | ZF162057* | 1 | 1-1/4 | 3-9/16 | WA203903 | 1-1/4 x 2-7/16 |
| ZF081230 | 1/2 | 3/4 | 1-7/8 | WA122600 | 3/4 x 1-5/8 | ZF162073* | 1 | 1-1/4 | 4-9/16 | WA204800 | 1-1/4 x 3 |
| ZF081236 | 1/2 | 3/4 | 2-1/4 | WA122600 | 3/4 x 1-5/8 | ZF16208* | 1 | 1-1/4 | 5-9/16 | WA204800 | 1-1/4 x 3 |
| ZF081238 | 1/2 | 3/4 | 2-3/8 | WA122600 | 3/4 x 1-5/8 | ZF202458* | 1-1/4 | 1-1/2 | 3-9/16 | WA245600 | 1-1/2 x 3-1/2 |
| ZF081239 | 1/2 | 3/4 | 2-7/16 | WA122600 | 3/4 x 1-5/8 | ZF202473* | 1-1/4 | 1-1/2 | 4-9/16 | WA245600 | 1-1/2 x 3-1/2 |
| ZF081248 | 1/2 | 3/4 | 3 | WA122600 | 3/4 x 1-5/8 | ZF202489* | 1-1/4 | 1-1/2 | 5-9/16 | WA245600 | 1-1/2 x 3-1/2 |

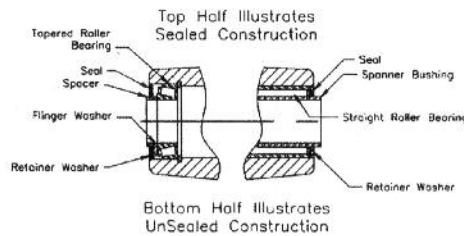
Straight roller Bearing & Retaining Washers

Straight roller bearings include roller assembly with split outer race but does not include the retaining washers. Retaining washers are ordered separately in quantities of 2 per wheel.

| Part Number | Roller Bearing Size | | | Retaining Washer Numbers | | Size (inches) |
|-------------|---------------------|-------------|-----------------|--------------------------|-----------|-----------------|
| | ID (inches) | OD (inches) | Length (inches) | Plain | Sealed | |
| ZB081718 | 1/2 | 1-1/16 | 1-1/8 | WA081703 | WA081790 | 1/2 X 1-1/16 |
| ZB163140 | 1 | 1-15/16 | 2-1/2 | WA163103 | WA163190 | 1 x 1-15/16 |
| ZB163148 | 1 | 1-15/16 | 3 | WA163103 | WA163190 | 1 x 1-15/16 |
| ZB163164 | 1 | 1-15/16 | 4 | WA163103 | WA163190 | 1 x 1-15/16 |
| ZB183148 | 1 | 1-15/16 | 3 | WA203103 | | 1-1/4 x 1-15/16 |
| ZB203140 | 1-1/8 | 1-15/16 | 2-1/2 | WA203103 | WA203190 | 1-1/4 x 1-15/16 |
| ZB203148 | 1-1/4 | 1-15/16 | 3 | WA203103 | WA203190 | 1-1/4 x 1-15/16 |
| ZB081922 | 1/2 | 1-3/16 | 1-3/8 | WA121900 | | 3/4 X 1-3/16 |
| ZB081932 | 1/2 | 1-3/16 | 2 | WA121900 | | 3/4 X 1-3/16 |
| ZB101922 | 5/8 | 1-3/16 | 1-3/8 | WA121900 | WA101990 | 3/4 X 1-3/16 |
| ZB101932 | 5/8 | 1-3/16 | 2 | WA121900 | WA101990 | 5/8 x 1-3/16 |
| ZB101940 | 5/8 | 1-3/16 | 2-1/2 | WA121900 | WA101990 | 5/8 x 1-3/16 |
| ZB121920 | 3/4 | 1-3/16 | 1-1/4 | WA121900 | WA121905* | 3/4 X 1-3/16 |
| ZB121930 | 3/4 | 1-3/16 | 1-7/8 | WA121900 | WA121905* | 3/4 X 1-3/16 |
| ZB121940 | 3/4 | 1-3/16 | 2-1/2 | WA121900 | WA121990 | 3/4 X 1-3/16 |
| ZB142332 | 7/8 | 1-7/16 | 2 | WA162303 | WA142390 | 7/8 x 1-7/16 |
| ZB162328 | 7/8 | 1-7/16 | 1-3/4 | WA162303 | WA162390 | 1 x 1-7/16 |
| ZB244580 | 1-1/2 | 2-13/16 | 5 | WA244503 | | 1-1/2 x 2-13/16 |
| ZB203948 | 1-1/4 | 2-7/16 | 3 | WA203903 | WA203990 | 1-1/4 x 2-7/16 |
| ZB203964 | 1-1/4 | 2-7/16 | 4 | WA203903 | WA203990 | 1-1/4 x 2-7/16 |
| ZB203980 | 1-1/4 | 2-7/16 | 5 | WA203903 | WA203990 | 1-1/4 x 2-7/16 |
| ZB243948 | 1-1/4 | 2-7/16 | 3 | WA243903 | WA243990 | 1-1/2 x 2-7/16 |
| ZB243964 | 1-1/2 | 2-7/16 | 4 | WA243903 | WA243990 | 1-1/2 x 2-7/16 |
| ZB243980 | 1-1/2 | 2-7/16 | 5 | WA243903 | WA243990 | 1-1/2 x 2-7/16 |
| ZB284948 | 1-3/4 | 3-1/16 | 3 | WA284903 | | 1-3/4 x 3-1/16 |
| ZB284964 | 1-3/4 | 3-1/16 | 4 | WA284903 | | 1-3/4 x 3-1/16 |
| ZB284980 | 1-3/4 | 3-1/16 | 5 | WA284903 | | 1-3/4 x 3-1/16 |
| ZB325248 | 2 | 3-1/4 | 3 | WA325203 | | 2 x 3-1/4 |
| ZB325264 | 2 | 3-1/4 | 4 | WA325203 | | 2 x 3-1/4 |
| ZB325280 | 2 | 3-1/4 | 5 | WA325203 | | 2 x 3-1/4 |
| ZB325296 | 2 | 3-1/4 | 6 | WA325203 | | 2 x 3-1/4 |

* Washer is made of Nylon

Line drawing (right) section view shows typical wheel hub construction with sealed straight and tapered roller bearings. Note spacer tubes are used with tapered roller bearings which increases hub length 1/4" and facilitates proper loading of cup to cone. For non-sealed construction, seal is replaced with retainer and flinger washers.



Oilex

| Part Number | ID (inches) | OD (inches) | Length (inches) |
|-------------|-------------|-------------|-----------------|
| ZO081722 | 1/2 | 1-1/16 | 1-3/8 |
| ZO081926 | 1/2 | 1-3/16 | 1-5/8 |
| ZO081935 | 1/2 | 1-3/16 | 2-3/16 |
| ZO101926 | 5/8 | 1-3/16 | 1-5/8 |
| ZO101935 | 5/8 | 1-3/16 | 2-3/16 |
| ZO121926 | 3/4 | 1-3/16 | 1-5/8 |
| ZO121935 | 3/4 | 1-3/16 | 2-3/16 |

Ball Bearings

| Part Number | ID (inches) | OD (inches) |
|-------------|-------------|-------------|
| ZAO1900 | 1/2 | 1-3/16 |
| ZAO81902 | 1/2 | 1-3/16 |

Axles

Hollow axles have zerkl fitting for lubrication and solid axles are without lubrication fitting. All axles come complete with lock nut.

| Axle Number | Type | Diameter & Length (inches) |
|-------------|------------------|----------------------------|
| ZJ063508 | Hollow | 3/8 x 2-3/16 |
| ZJ063509 | Solid | 3/8 x 2-3/16 |
| ZJ084508 | Hollow | 1/2 x 2-13/16 |
| ZJ084509 | Solid | 1/2 x 2-13/16 |
| ZJ085408 | Hollow | 1/2 x 3-3/8 |
| ZJ085409 | Solid | 1/2 x 3-3/8 |
| ZJ085808 | Hollow | 1/2 x 3-3/8 |
| ZJ086408 | Hollow | 1/2 x 4 |
| ZJ087209 | Solid | 1/2 x 4-1/2 |
| ZJ105608 | Hollow | 5/8 x 3-1/2 |
| ZJ126808 | Hollow | 3/4 x 4-1/4 |
| ZJ127608 | Hollow | 3/4 x 4-3/4 |
| ZJ127608 | Solid | 3/4 x 4-3/4 |
| ZJ168009 | Solid | 1 x 5 |
| ZJ169609 | Solid | 1 x 6 |
| ZJ169608 | Hollow | 1 x 6 |
| ZJ063510 | Solid Stainless | 3/8 x 2-3/16 |
| ZJ085608 | Hollow Stainless | 1/2 x 3-1/2 |
| ZJ085609 | Solid Stainless | 1/2 x 3-1/2 |

Consult Acorn for optional slotted nuts and lock pins.

